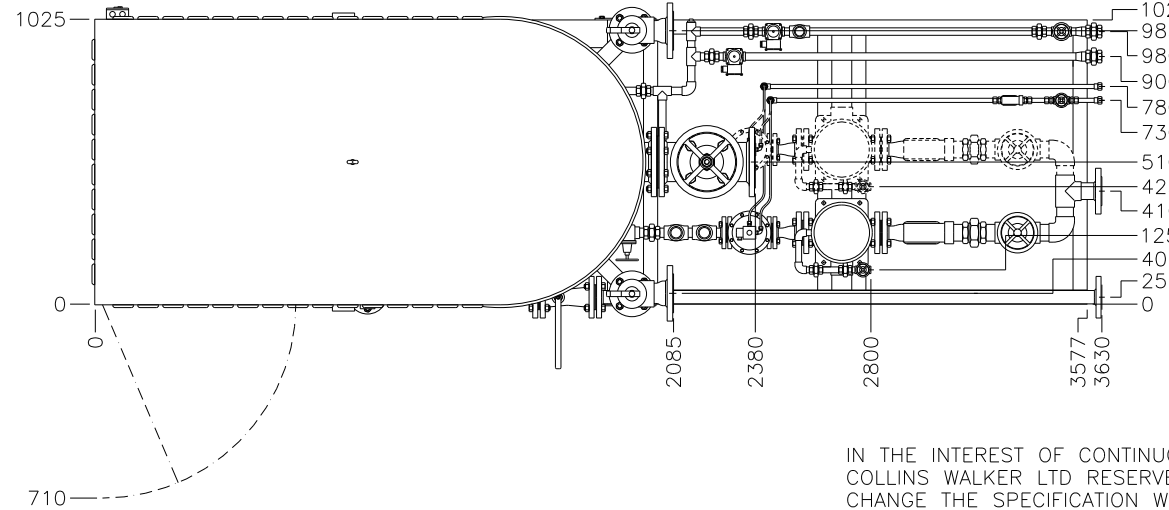
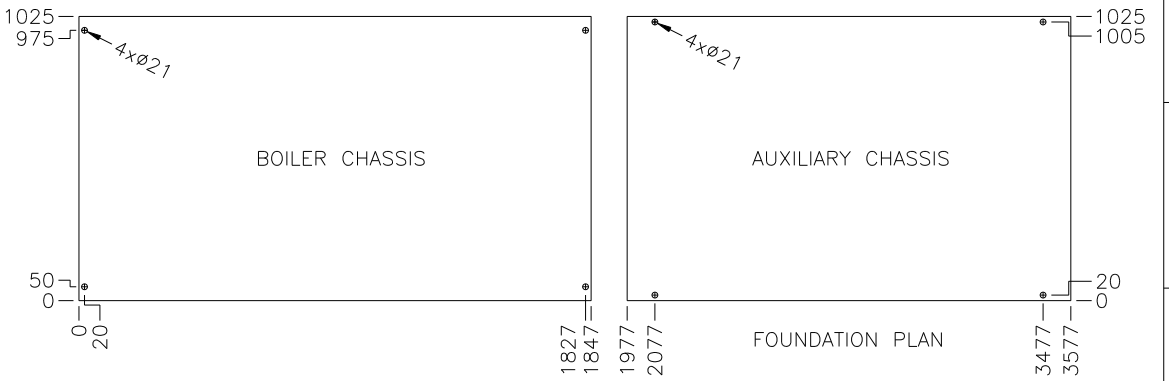
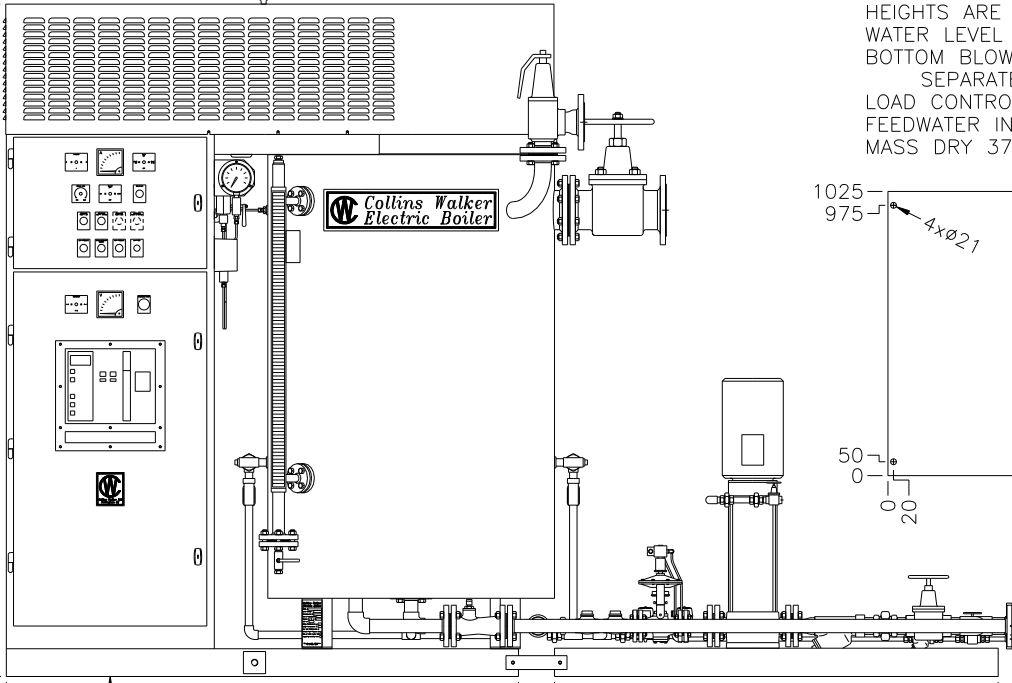


1 2 3 4 5 6 7 8

A B C D E F G H

NOTES:-  
 FLANGES ARE BS4504 PN16 RAISED FACE  
 HEIGHTS ARE FROM BOTTOM OF CHASSIS  
 WATER LEVEL GAUGE BLOWDOWN DISCHARGE PIPEWORK REQUIRED BY OTHERS  
 BOTTOM BLOWDOWN AND INTERMITTENT BLOWDOWN PIPES TO BE TAKEN  
 SEPARATELY TO BLOWDOWN VESSEL  
 LOAD CONTROL DISCHARGE PIPE TO TERMINATE AT SPARGE PIPE IN HOTWELL  
 FEEDWATER INLET PIPE TO BE MINIMUM DN50 DEPENDING ON LENGTH  
 MASS DRY 3750KG OPERATING 5000KG

4500 MINIMUM HEIGHT TO LIFTING HOOK  
 IN RAISED POSITION OVER CENTRE OF VESSEL  
 FOR LIFTING TOP COVER/ELECTRODE ASSEMBLY  
 MAXIMUM LIFTING MASS 1500KG



- 1025 985 SAFETY VALVE DN80 HEIGHT 2000
- 980 LOAD CONTROL DISCHARGE 1" BSP FEMALE HEIGHT 150
- 900 INTERMITTENT BLOWDOWN 1" BSP FEMALE HEIGHT 150
- 780 INSTRUMENT WATER OUT 1/2" BSP FEMALE HEIGHT 135
- 730 INSTRUMENT WATER IN 1/2" BSP FEMALE HEIGHT 135
- 510 STEAM DN125 HEIGHT 1680
- 425 PUMP BYPASS 1/2" BSP FEMALE HEIGHT 650
- 410 FEEDWATER DN50 HEIGHT 185
- 125 PUMP BYPASS 1/2" BSP FEMALE HEIGHT 650
- 40 SAFETY VALVE DN80 HEIGHT 2000
- 25 BLOWDOWN DN40 HEIGHT 185

OPTIONAL SECOND FEEDWATER PUMP SET SHOWN DASHED

IN THE INTEREST OF CONTINUOUS DEVELOPMENT  
 COLLINS WALKER LTD RESERVE THE RIGHT TO  
 CHANGE THE SPECIFICATION WITHOUT NOTICE

<b>COLLINS WALKER Ltd</b>		ALL DIMENSIONS IN MM ORIGINAL DWG SIZE A3 DO NOT SCALE DWG	
THIS DRAWING IS THE PROPERTY OF COLLINS WALKER LTD IN WHOM THE COPYRIGHT SUBSISTS			
TITLE GENERAL ARRANGEMENT ES240		SCALE 1:20	DRAWN M J DODD
JOB NO. _____ CLIENT _____		CHK'D T AKHTAR	APP'D C GODDARD
SUPERSEDES DWGS 5522-0 & 5529-1		DATE 25.07.2006	DWG NO A154
NO SHTS 1		SHT REV 1	A

REV'N	REV'N	REV'N	REV'N	REV'N	REV'N	REV'N	REV'N
DRAWN	DRAWN	DRAWN	DRAWN	DRAWN	DRAWN	DRAWN	DRAWN
CHK'D	CHK'D	CHK'D	CHK'D	CHK'D	CHK'D	CHK'D	CHK'D
APP'D	APP'D	APP'D	APP'D	APP'D	APP'D	APP'D	APP'D
DATE	DATE	DATE	DATE	DATE	DATE	DATE	DATE

1 2 3 4 5 6 7 8